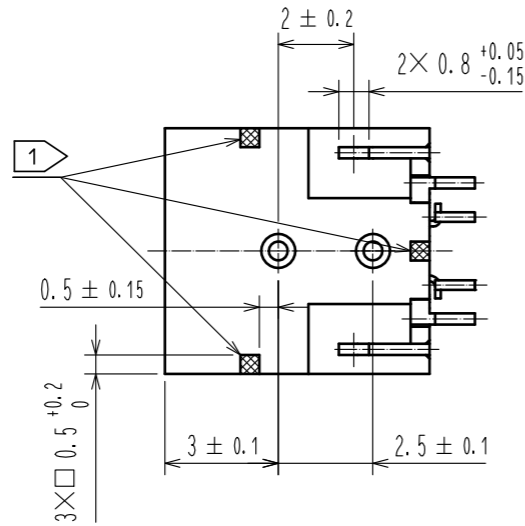
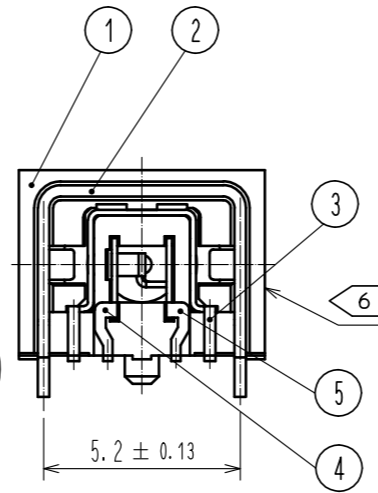
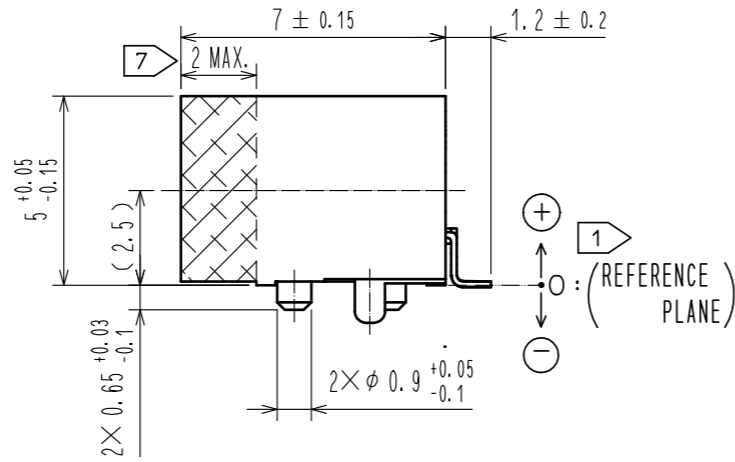
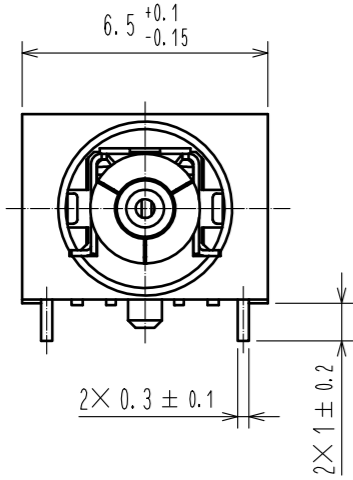
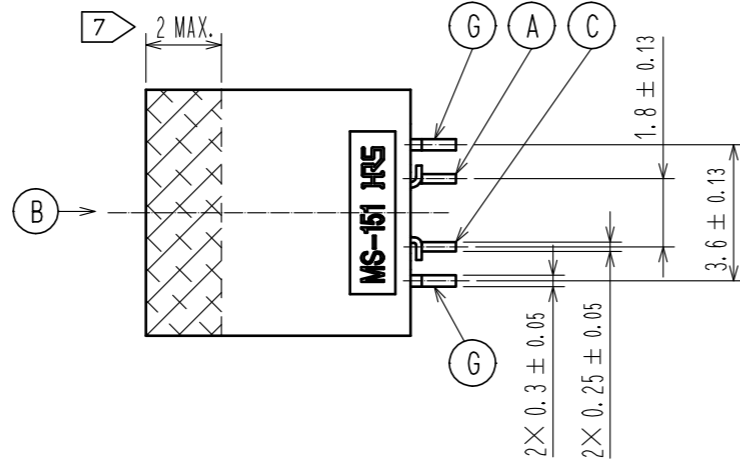
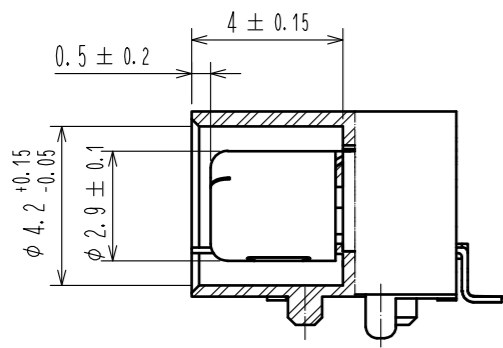
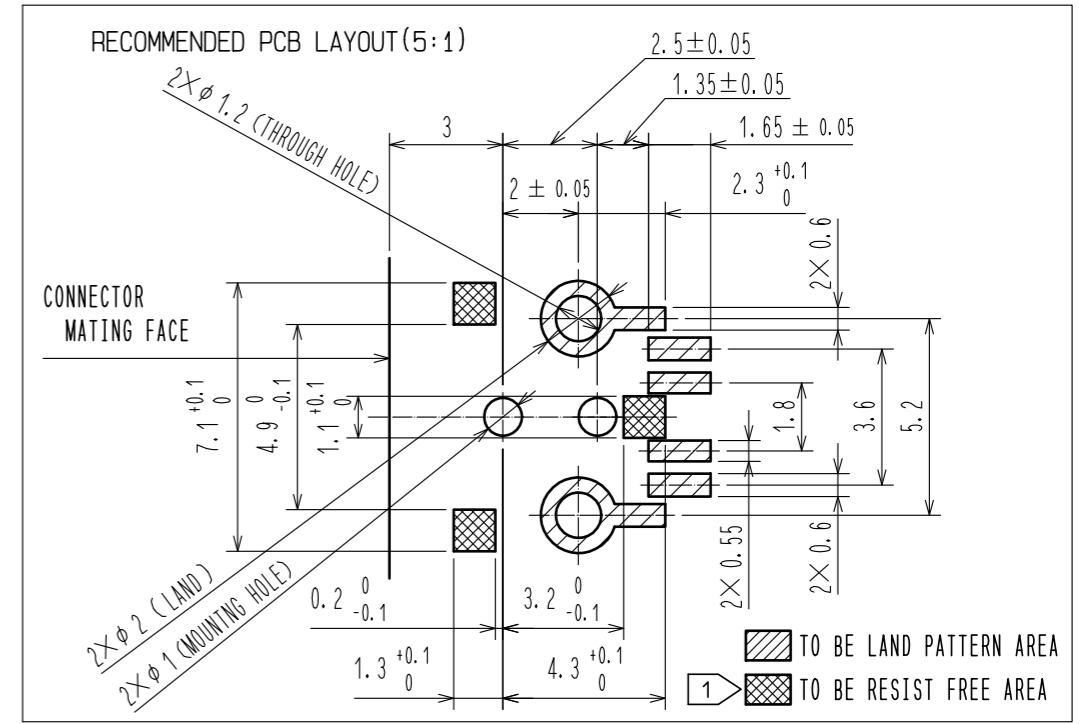
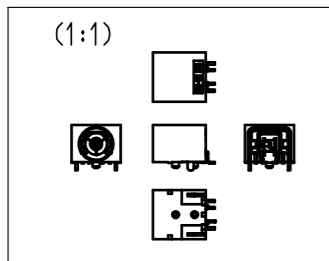
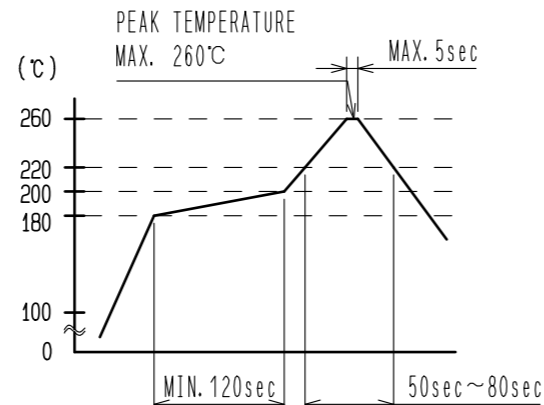


APPLICABLE STANDARD					
RATING	FREQUENCY RANGE	0.045 TO 3 GHz	STORAGE TEMPERATURE RANGE	-40°C TO +85°C	
	POWER	4 W	CHARACTERISTIC IMPEDANCE	50 Ω	
	OPERATING TEMPERATURE RANGE	-40°C TO +85°C	OPERATING HUMIDITY RANGE	% TO 90% (Non condensing)	
SPECIFICATIONS					
ITEM	TEST METHOD		REQUIREMENTS	QT	AT
CONSTRUCTION					
GENERAL EXAMINATION	VISUALLY AND BY MEASURING INSTRUMENT.		ACCORDING TO DRAWING.	X	X
MARKING	CONFIRMED VISUALLY.				
ELECTRIC CHARACTERISTICS					
CONTACT RESISTANCE	100 mA MAX (DC OR 1000 Hz).		50 mΩ MAX.	X	X
INSULATION RESISTANCE	100 V DC.		1000 MΩ MIN.	X	-
VOLTAGE PROOF	100 V AC FOR 1 min.		NO FLASHOVER OR BREAKDOWN.	X	X
V.S.W.R.	①	FREQUENCY 0.045 TO 1.0 GHz	N·C, N·O : 1.2 MAX	X	-
		FREQUENCY 1.0 TO 2.0 GHz	N·C, N·O : 1.4 MAX		
		FREQUENCY 2.0 TO 3.0 GHz	N·C, N·O : 1.7 MAX		
INSERTION LOSS	①	FREQUENCY 0.045 TO 1.0 GHz	N·C : 0.2dB MAX. N·O : 0.3dB MAX.	X	-
		FREQUENCY 1.0 TO 2.0 GHz	N·C : 0.4dB MAX. N·O : 0.5dB MAX.		
		FREQUENCY 2.0 TO 3.0 GHz	N·C : 0.6dB MAX. N·O : 1.0dB MAX.		
ISOLATION		FREQUENCY 0.045 TO 1.0 GHz	20 dB MIN.	X	-
		FREQUENCY 1.0 TO 2.0 GHz	18 dB MIN.		
		FREQUENCY 2.0 TO 3.0 GHz	12 dB MIN.		
MECHANICAL CHARACTERISTICS					
MECHANICAL OPERATION	5000 TIMES INSERTIONS AND EXTRACTIONS.		1) CONTACT RESISTANCE : 100mΩMAX. 2) NO DAMAGE, CRACK AND LOOSENESS OF PARTS.	X	-
VIBRATION	FREQUENCY 10 TO 500 Hz SINGLE AMPLITUDE 0.75 mm, 98 m/s ² 1 CYCLE : 11min, 10 CYCLES FOR EACH 3 DIRECTIONS.		1) NO ELECTRICAL DISCONTINUITY OF 10μs. 2) CONTACT RESISTANCE : 100mΩMAX. 3) NO DAMAGE, CRACK AND LOOSENESS OF PARTS.	X	-
SHOCK	ACCELERATION : 490 m/s ² DURATION : 11 ms, HALF SINE WAVE 3 BOTH AXIAL DIRECTIONS, 3 TIMES EACH				
INSERTION AND WITHDRAWAL FORCES	MEASURED BY APPLICABLE CONNECTOR. (INITIAL VALUE)		INSERTION FORCE : 1~10N WITHDRAWAL FORCE : 3~15N	X	-
ENVIRONMENTAL CHARACTERISTICS					
RAPID CHANGE OF TEMPERATURE	TEMPERATURE -55 → 5-35 → +85 → 5-35 °C TIME 30 → 2-3 → 30 → 2-3 min. UNDER 100 CYCLES AND LEAVE IT FOR ONE HOUR OR TWO.		1) CONTACT RESISTANCE: 100 mΩ MAX. 2) INSULATION RESISTANCE: 10 MΩ MIN. 3) NO DAMAGE, CRACK AND LOOSENESS OF PARTS.	X	-
SALT MIST	EXPOSED IN 5±1% TEMPERATURE 35±2°C SALT WATER SPRAY FOR 48h		1) CONTACT RESISTANCE : 100mΩMAX. 2) NO HEAVY CORROSION.	X	-
DAMP HEAT (STEADY STATE)	EXPOSED AT +40°C, 90~95%,96h. THEN LEAVE IT FOR ONE HOUR OR TWO IN THE AMBIENT TEMPERATURE AND HUMIDITY.		1) CONTACT RESISTANCE: 100 mΩ MAX. 2) INSULATION RESISTANCE: 10 MΩ MIN. 3) NO DAMAGE, CRACK AND LOOSENESS OF PARTS.	X	-
COUNT	DESCRIPTION OF REVISIONS	DESIGNED	CHECKED	DATE	
①					
REMARK		RoHS COMPLIANT	APPROVED	KH. IKEDA	15.08.03
① N·O SPEC INCLUDE MS-151-C(LP) AND CABLE .			CHECKED	NK. NINOMIYA	15.08.03
Unless otherwise specified, refer to IEC-60512.			DESIGNED	RO. FURUYAMA	15.08.03
			DRAWN	RO. FURUYAMA	15.08.03
Note QT:Qualification Test AT:Assurance Test X:Applicable Test		DRAWING NO.		ELC-353753-01-01	
HRS	SPECIFICATION SHEET		PART NO.	MS-151NB-1 (01)	
	HIROSE ELECTRIC CO., LTD.		CODE NO.	CL358-0345-4-01	① 1/1

MATING FACE DIMENSIONS

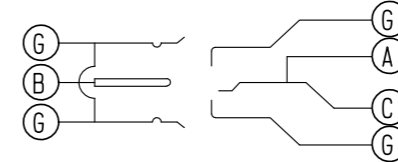


SPECIFIED REFLOW TEMPERATURE PROFILE FOR LEAD-FREE SOLDER

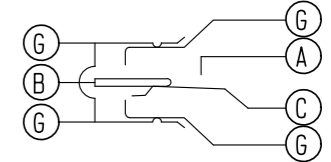


- NOTE 1: IS REFERENCE PLANE FOR PCB MOUNTING. SMT READ COPLANARITY SHALL BE $-0.05^{+0.03}_{-0.07}$ FOR REFERENCE PLANE.
2. USE THIS PRODUCT WITH MS-151-C(LP) AND EQUIVALENT CONTACT MATED.
3. COAXIAL SWITCH CIRCUIT SHALL BE AS FOLLOWS.

STATE OF CONTACT NONMATED (N.C.:NORMAL CLOSE)



STATE OF CONTACT MATED (N.O.:NORMAL OPEN)



4. THIS PRODUCT IS IMPOSSIBLE TO WASH.

5. USE 0.15mm THICK METAL MASK.

6. LOT NO. IS MARKED ON THE SPECIFIED SURFACE.

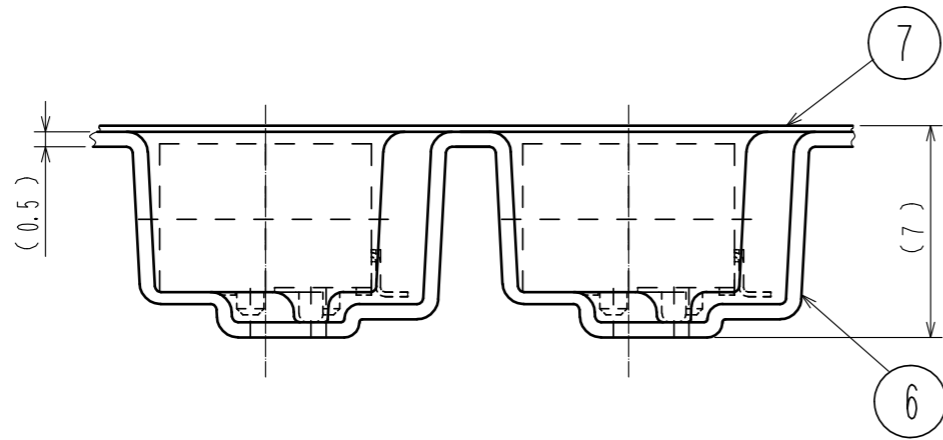
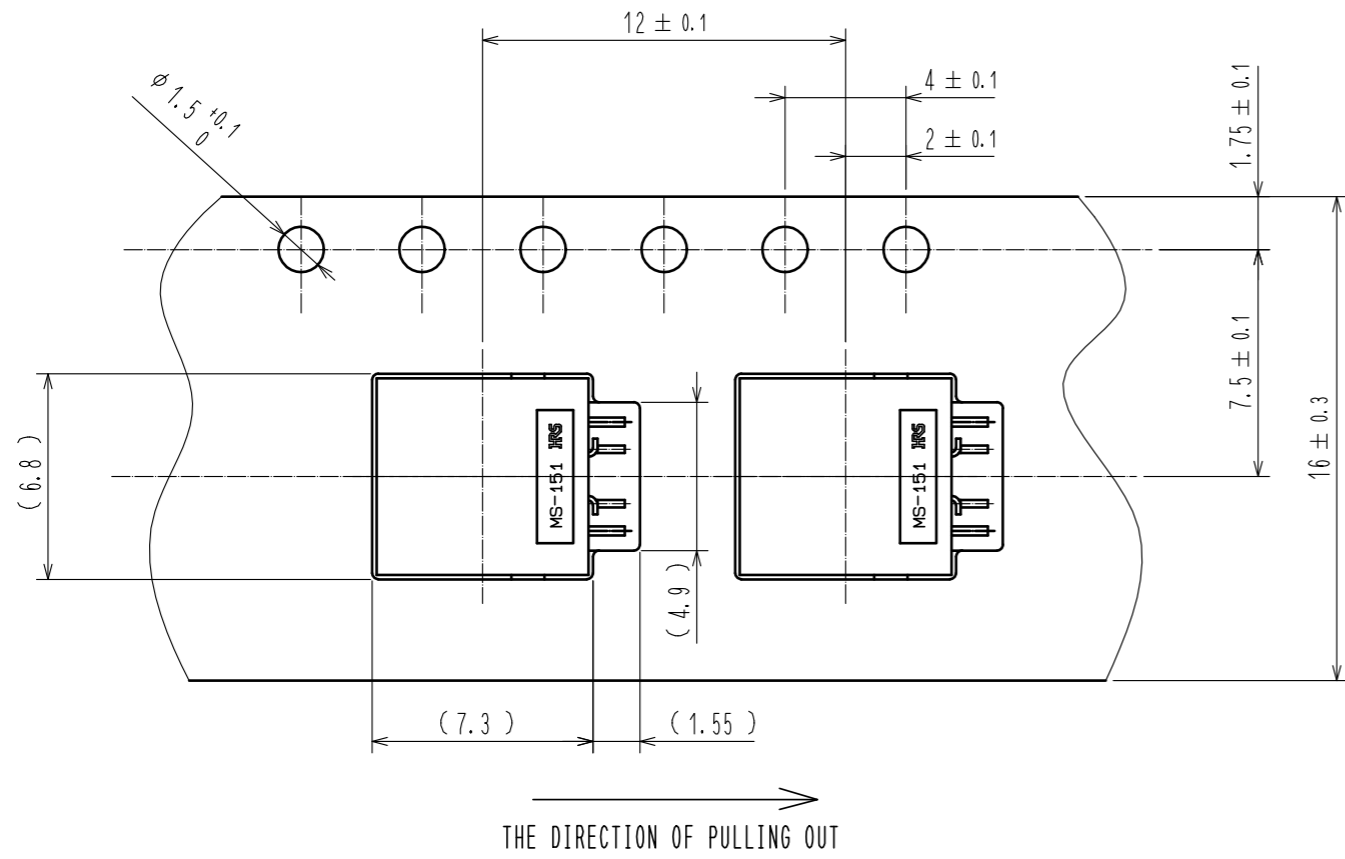
7. FIX THE CONNECTOR WITH DEVICE CHASSIS AT THE AREA WITHIN 2mm FROM THE OPENING .

RoHS COMPLIANT

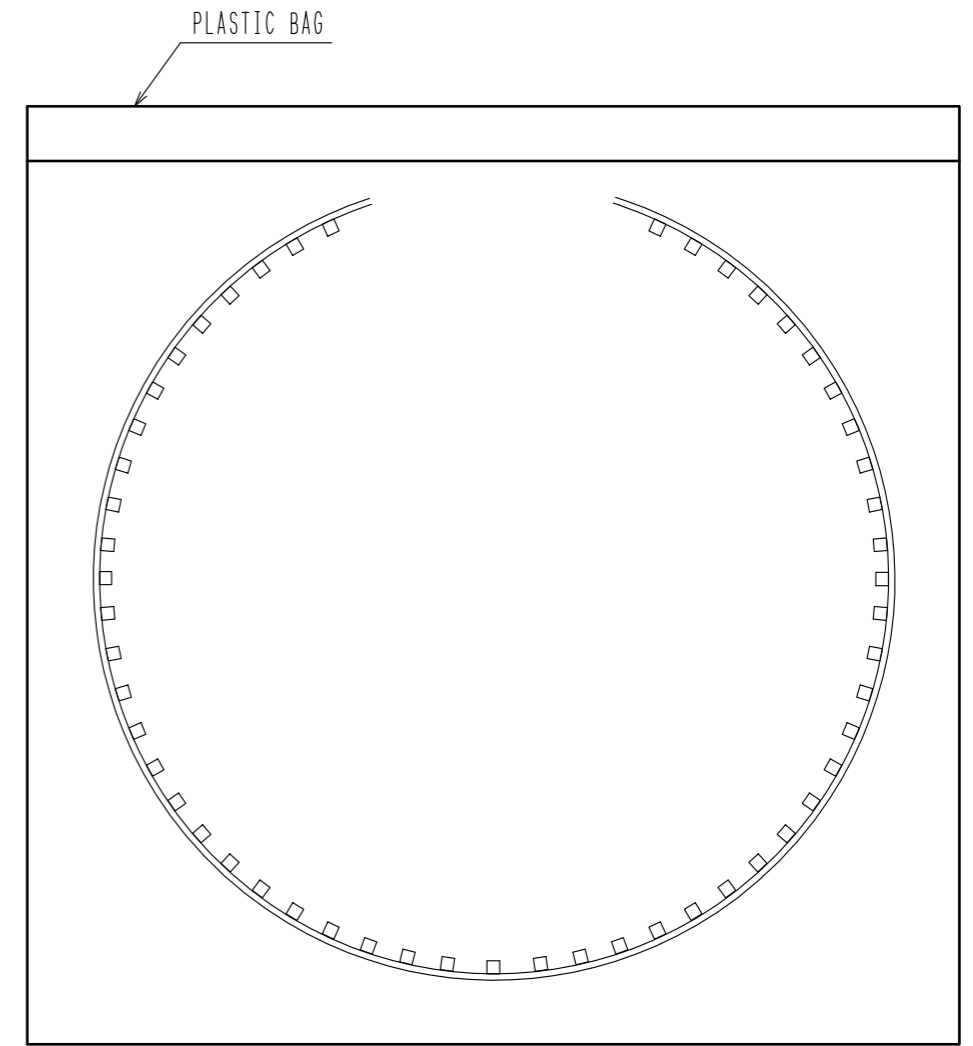
HALOGEN FREE COMPLIANT

3	PHOSPHOR BRONZE	SELECTIVE GOLD PLATING	7	PET	
2	STAINLESS STEEL	SELECTIVE GOLD PLATING	6	PS	
1	PA-M		5	PHOSPHOR BRONZE	SELECTIVE GOLD PLATING
			4	BERYLLIUM COPPER	SELECTIVE GOLD PLATING
NO.	MATERIAL	FINISH . REMARKS	NO.	MATERIAL	FINISH . REMARKS
UNITS mm		SCALE 5 : 1	COUNT	DESCRIPTION OF REVISIONS	DESIGNED
HRS	HIROSE ELECTRIC CO., LTD.	APPROVED : KH. IKEDA	15.08.03	DRAWING NO.	EDC-353753-01-01
		CHECKED : NK. NINOMIYA	15.08.03	PART NO.	MS-151NB-1(01)
		DESIGNED : RO. FURUYAMA	15.08.03	CODE NO.	CL358-0345-4-01
		DRAWN : RO. FURUYAMA	15.08.03		

TAPE AND REEL PACKING (4 : 1)



PLASTIC BAG PACKING (FREE) 100 PIECES PER BAG



HRS	DRAWING NO.	EDC-353753-01-01	2/2
	PART NO.	MS-151NB-1(C01)	
	CODE NO.	CL358-0345-4-01	